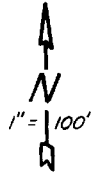


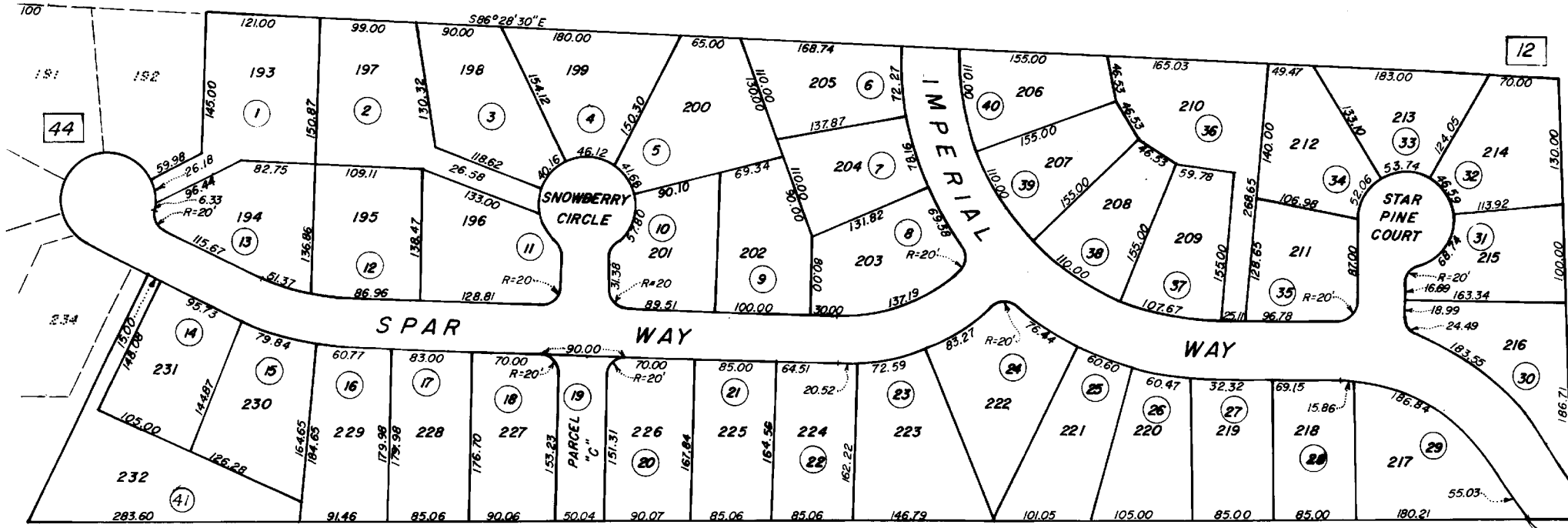
PARADISE PINES UNIT NO. 3

PTM. N. E. 1/4, SEC.14, T23N, R3E.



14

(PARADISE SPRINGS UNIT NO. 2)



12

44

27

36

All Assessors' maps are prepared for local property assessment purposes ONLY and the parcels shown thereon may not comply with State and local subdivision ordinances. No liability is assumed for the use of the information shown on any Assessors' map.

Assessor's Map No. 65-45
County of Butte, Calif.